



# Living Labs Accelerating Innovations with Users

*Veera Mustonen, Executive Director, LifeLab, GCMA*

# Technology is changing our everyday life very fast



[This Photo](#) by Unknown Author is licensed under [CC BY-SA](#)



[This Photo](#) by Unknown Author is licensed under [CC BY-NC-ND](#)

# Technological innovations do not change the world alone

- How do we as humans want to use new opportunities enabled by emerging technologies?
- Sociotechnical challenges
- New technologies require behavioural changes

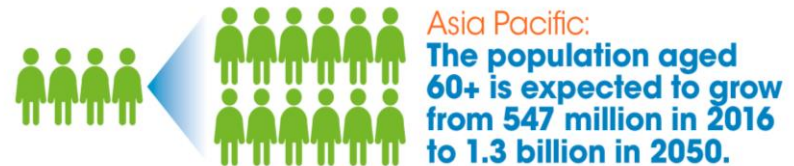




# Circumstances for older people changing



- Societies turn older
- Older individuals changing lifestyles
- New technologies entering all domains of life



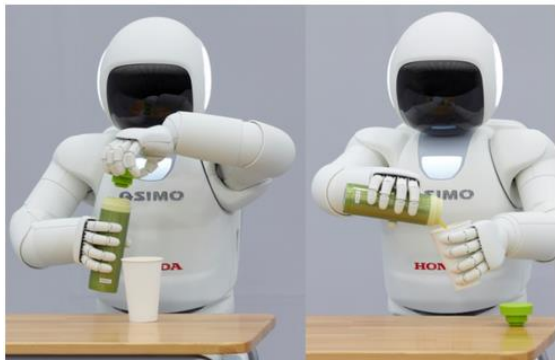
# Systemic challenge: Ageing in place



**Monitors** - motion, door, appliance, lighting monitors linked to mobile phone apps used by family or carer.

**Falls** - Automatic fall-alert devices, including latest Apple watch

**How to master all the technology entering one's home?**



**Robots** - can serve as a butler or companion and manage medical data, entertainment and telephony.

# Living Labs to help with systemic challenges

Living Labs bring together people, public and private sector and research organisations for joint value co-creation and validation to scale up and speed up innovation and businesses.



# Living Labs are connectors

## Bridging the GAP

Technology

Professional knowledge

Companies

Private



Real world

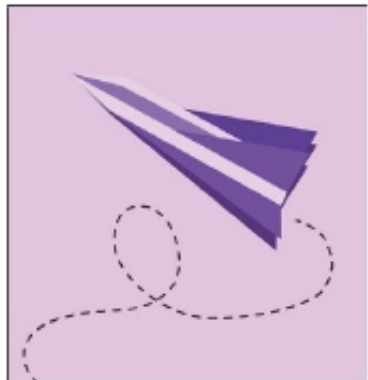
User expertise

People

Public

# Living Labs' Innovation Activities

Pilot, experiment, get out there!



**Evaluate**

**Experiment**



**Explore**



Close to real life settings with real users.



# Living Labs Operate Globally

## Living Labs ENoLL Global Landscape



**130**

active Living Labs globally

Rectangular Snip

**12** Ageing specific

UK **2**

Europe **9**

Australia **1\***

Health and Wellbeing

**72**  
globally

**16** Ageing themes

UK **2**

Europe **14**

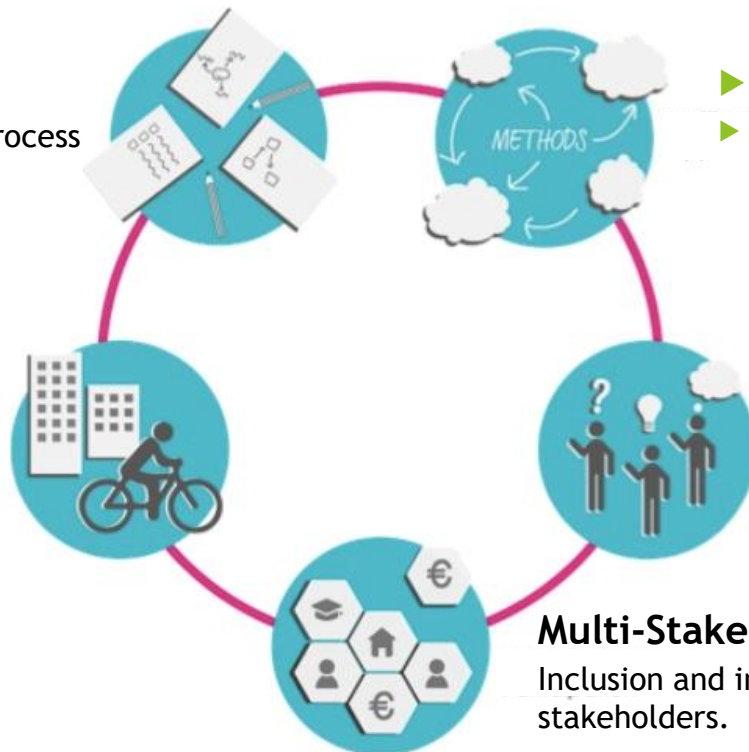
# Living Lab - basic principles

## Co-Design

Users acknowledged as valuable contributors in the development process (not as 'subjects').

## Real-Life Setting

Activities occur in settings as close to 'real-life' as possible.



## Multi-method Approach

- ▶ No single approach - use, combine & customise different methods fit for purpose.

## User Engagement

End-users engaged throughout the development process.

## Multi-Stakeholder Participation

Inclusion and involvement of all other relevant stakeholders.



FOR, WITH and BY People!



User centric innovation

# LifeLab co-design case: Potato based highly nutritious food for elderly



- **User insights are revealing to the entrepreneurs**
  - “Like Mum used to make.”
  - “That will be too nutritious for one meal.”
- **Participants willing to contribute for good and to learn**
  - Food waste reduction theme appealing
- **Co-design with innovators and the users initiates new ways of product creation**
  - “Shall we continue in John’s kitchen?”



# Helsinki Living Lab case: Senior Peer-to-Peer Gym



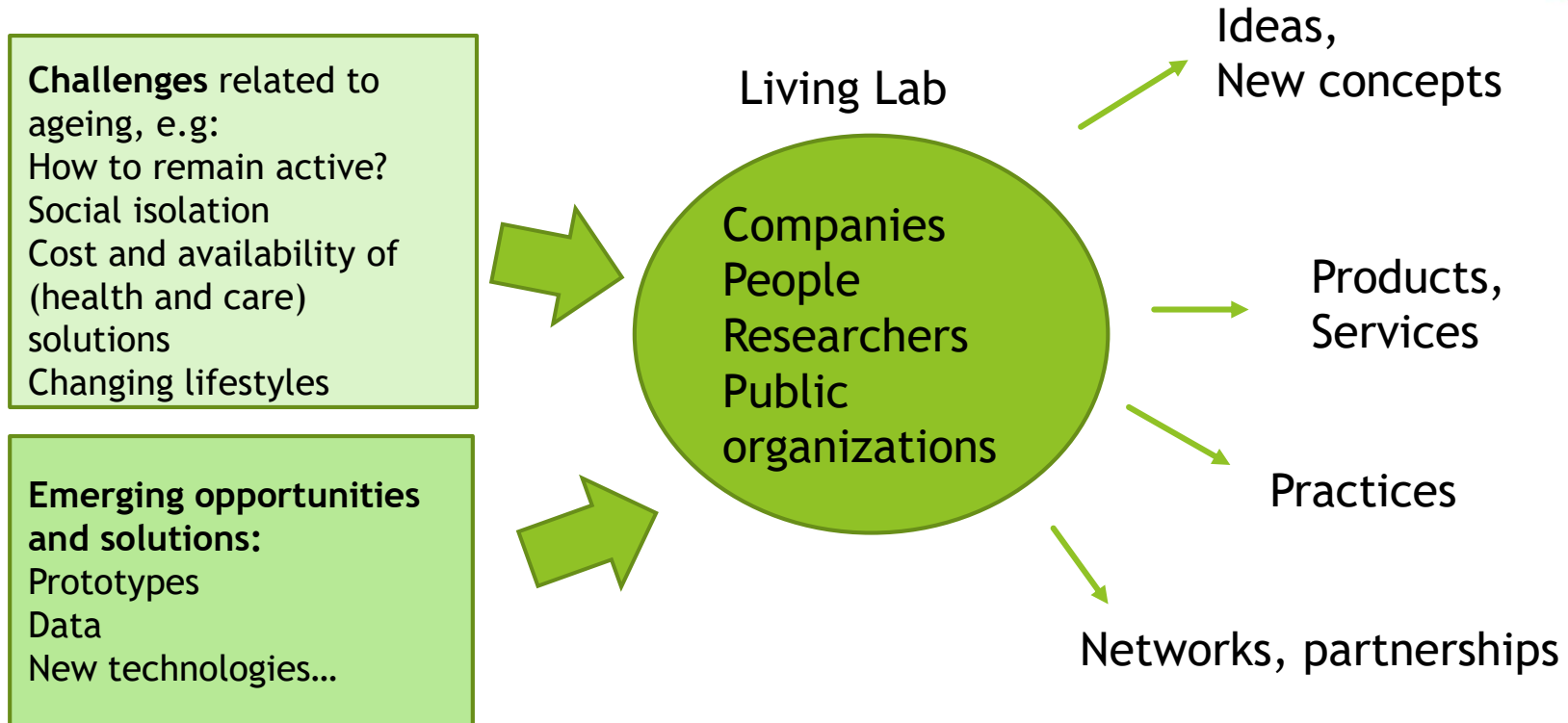
**movendos**

**FIKSU  
KALASATAMA**



- Engaging seniors to create and validate a new offering: senior peer-to-peer exercise model supported by a virtual personal coaching platform
- 35 seniors got to know each other and still continue exercising together in their neighbourhood
- Outcomes:
  - New business model validated with users
    - Supports local social life and active lifestyle
    - Provides opportunities for seniors to train others

# Outcomes of Living Labs



# Co-creating futures

- Living Labs provide means to connect people, businesses and researchers to accelerate meaningful adoption of new technologies for everyday life.
- Living Labs aim to accelerate future solutions to market matching the real life and user needs.



# About Global Centre for Modern Ageing

The Global Centre for Modern Ageing (GCMA) was established in 2018 to take Australia to the forefront of modern ageing in the world.

The Global Centre for Modern Ageing creates an ecosystem that empowers people, businesses, researchers and governments to seek and develop solutions that reflect the opportunities for modern ageing.



# GCMA LifeLab @ Tonsley

LifeLab @ Tonsley is a nation-leading testing and innovation facility to co-design and validate products and services in close to “real-life” environments.





# Come and work with us

## 1. Testbed with users!

SA as a Living Lab for ageing well -  
real life trials with users

## 2. Innovate with users!

Ageing well innovation with  
older people and companies

## 3. Validate with users!

Validating product/service offerings  
for the ageing well market



# Connect with us

## ITAC Conference Attendee Visits

LifeLab @ Tonsley tour and meet & greet. Friday, 23 November 2018 at 9.30am

**Visit our website to register**    [www.gcma.net.au](http://www.gcma.net.au)

# To Connect with Us

 GCMA [www.gcma.net.au](http://www.gcma.net.au)



@ModernAgeing



Global Centre for Modern Ageing



Global Centre for Modern Ageing



Sarah-Jane Adams, 63. @saramaliewels Amurri Lauren

<https://www.nytimes.com/2018/06/20/style/instagram-grandmas.html>