

# AUCTION RESULTS

**TERRITORIA/FAWCETT  
TRUCKS, HAULAGE &  
CIVIL EARTHMOVING**

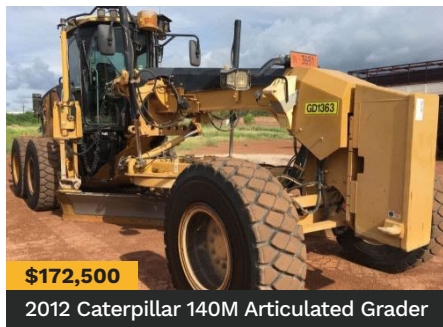
**\$5.9M** ASSETS  
SOLD

**550** ACTIVE  
BIDDERS

**20,723**  
LANDING PAGE VIEWS

**4,810**  
TOTAL USERS

**100%** CLEARANCE  
RATE



**SMITH PLANT  
BUSINESS CESSATION**

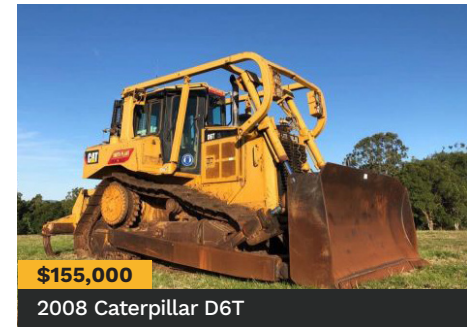
**\$3M+** ASSETS  
SOLD

**298** ACTIVE  
BIDDERS

**46,233**  
LANDING PAGE VIEWS

**10,300+**  
TOTAL USERS

**100%** CLEARANCE  
RATE



# AUCTION RESULTS

**JRT** EARTHMOVING  
& CIVIL EQUIPMENT

**\$2.9M** ASSETS  
SOLD

**786** ACTIVE  
BIDDERS

**69,099**  
LANDING PAGE VIEWS

**16,124**  
TOTAL USERS

**79%** CLEARANCE  
RATE



**\$122,500**

2011 John Deere Motor Grader



**\$88,000**

Hino Day Cab EWP



**\$85,000**

Lusty Full Widening Quad Axle Float

**ZEBRA WRECKING**  
COMPLETE DISPERSAL

**\$2.7M** ASSETS  
SOLD

**296** ACTIVE  
BIDDERS

**79,417**  
LANDING PAGE VIEWS

**23,757**  
TOTAL USERS

**89%** CLEARANCE  
RATE



**\$300,000**

2013 Car Light Gauge Baler



**\$220,000**

Hitachi ZX240LC-3 Excavator



**\$125,000**

2007 Hitachi ZX330LC-3 Excavator